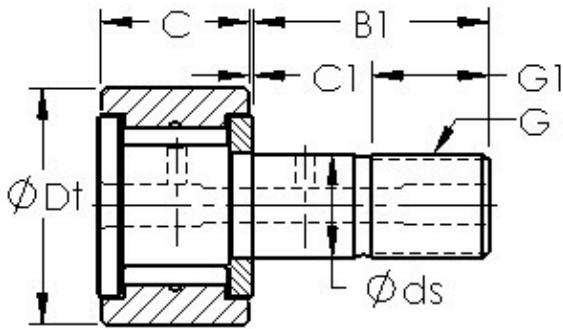




# Shandong Chik Bearing Co., Ltd.



## AST CF16 needle roller bearings

Bearing No. CF16

Bearing Type	Full Complement
Dynamic Load Rating (Cr)	1,730
Static Load Rating (Cor)	3,100
Max Speed (Grease) (X1000 RPM)	5,000
Tire Outer Dia. (Dt)	1.000
Stud Dia. (ds)	0.438
Tire Width (C)	0.625
Tire Washer Width (C1)	0.031
Total Length (B)	1.654
Stud Length (B1)	1.000
Threads (G) - 7/16-20 UNF	7/1620 UNF
Thread Length (G1)	0.5
Weight (g)	72.00
Material - Stud and Roller head: Hardened carbon steel alloy, Needle rollers	52100 Chrome steel or equivalent

CF16 Bearing 2D drawings and 3D CAD models