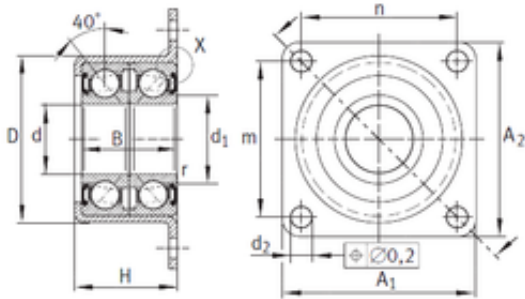




Shandong Chik Bearing Co., Ltd.

20 mm x 50,45 mm x 28 mm 20 mm x 50,45 mm x 28 mm INA ZKLR2060-2RS angular contact ball bearings



ZKLR2060-2RS Bearing 2D drawings and 3D CAD models

Bearing No. ZKLR2060-2RS

Size	20x50.45x28 mm
Bore Diameter	20 mm
Outer Diameter	50,45 mm
Width	28 mm
d	20 mm
D	50,45 mm
B	28 mm
n	47 mm
d1	24,4 mm
d2	6,6 mm
m	47 mm
r min.	0,3 mm
A1	60 mm
H	30 mm
Bolt (G)	M6
A2	60 mm
Weight	0,3 Kg
Dynamic load rating radial (C)	28 kN
Dynamic load rating axial (C)	27,5 kN
Static load rating radial (C0)	19,1 kN
Static load rating axial (C0)	40 kN